


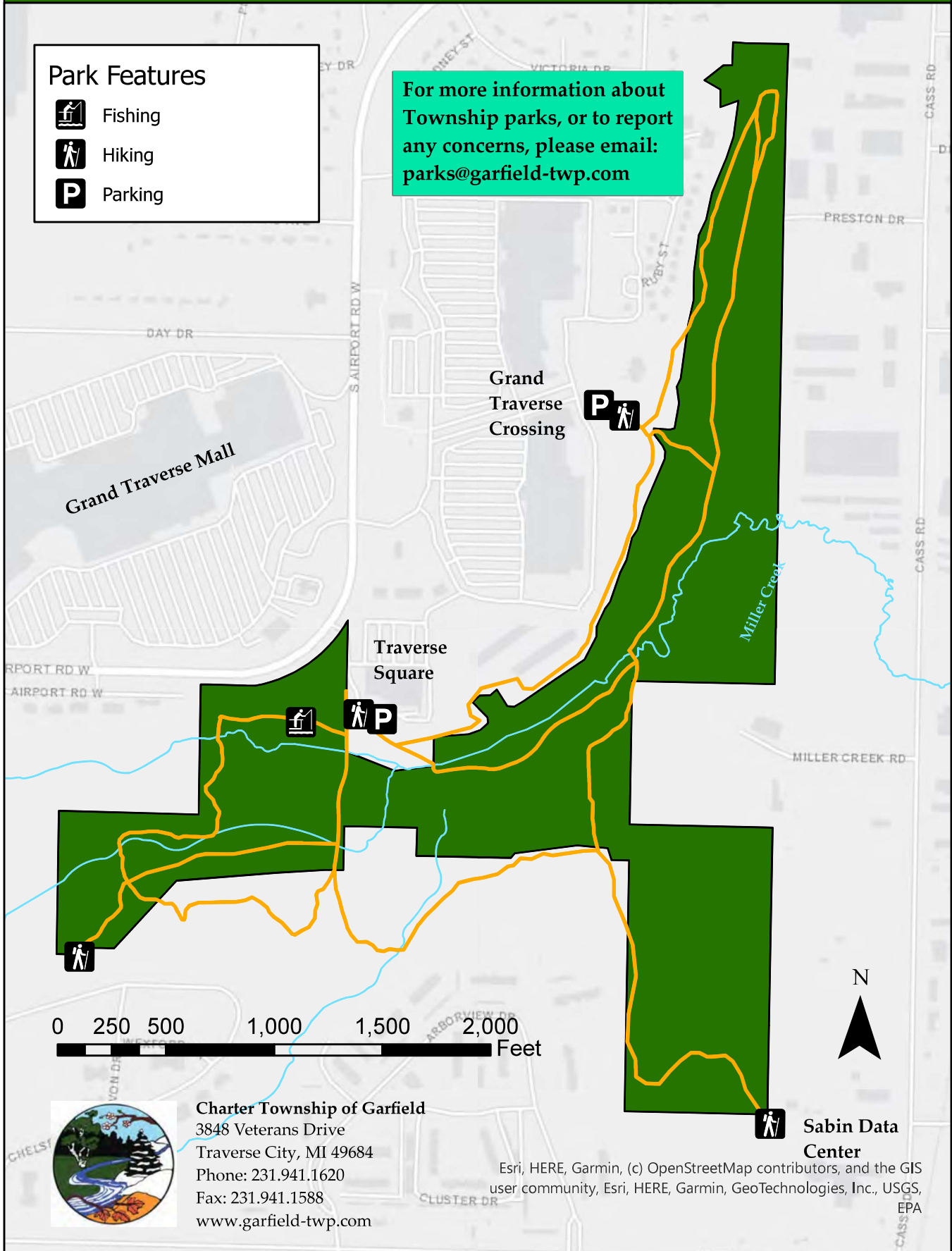


# Miller Creek Nature Reserve

## Park Features

-  Fishing
-  Hiking
-  Parking

For more information about Township parks, or to report any concerns, please email: [parcs@garfield-twp.com](mailto:parcs@garfield-twp.com)



**Charter Township of Garfield**  
3848 Veterans Drive  
Traverse City, MI 49684  
Phone: 231.941.1620  
Fax: 231.941.1588  
[www.garfield-twp.com](http://www.garfield-twp.com)

**Sabin Data Center**

Esri, HERE, Garmin, (c) OpenStreetMap contributors, and the GIS user community, Esri, HERE, Garmin, GeoTechnologies, Inc., USGS, EPA

# Miller Creek Nature Reserve

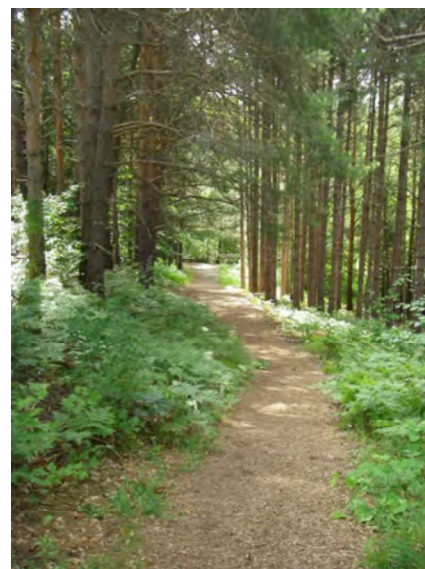


## Park Description

Just behind the Grand Traverse Crossing on South Airport Road, you can find the 94-acre Miller Creek Nature Reserve. Recreational opportunities at this park include hiking, nature watching, hunting (with prior Township approval), cross country skiing, and snowshoeing.

The trails at the Miller Creek Natural area pass through a former Red Pine plantation, skirt the edges of open meadows, wind through beautiful beech forests, cross boardwalks through cedar swamps, and follow Miller Creek, a tributary of the Boardman River. Very shortly, the trails at Miller Creek will be linked to the miles of trails within the Boardman Valley Nature Preserve via a connection across Cass Road at Dairy Square Drive.

Public restrooms are not available on site.



## Park Information

Location: W. South Airport Rd.  
Acreage: 94 acres  
Hunting: Allowed with Permit